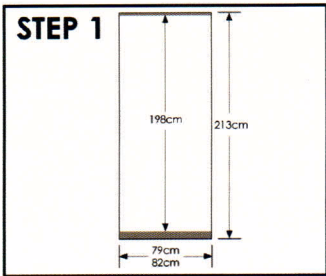
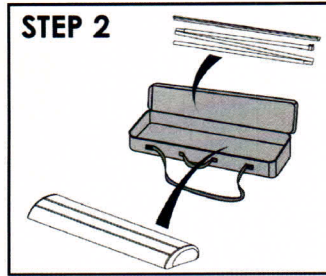


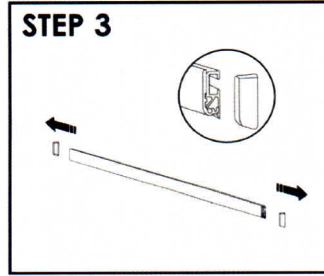
PAL Banner



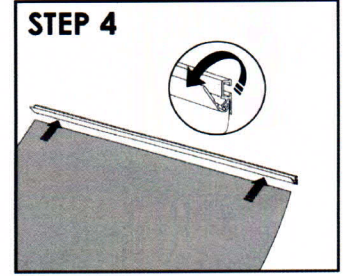
1. The PAL1 banner roll is 79cm wide x 213cm high (31" x 84"). PAL2 & PAL3 banner rolls are 82cm wide x 213cm high (32 1/4" x 84"). Viewable height on all is 198cm (78").



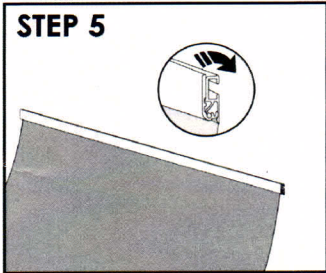
2. The case should contain a base unit, 3-piece pole, and upper banner attaching beam. **(Note: if graphic banner is already installed, proceed directly to step 11.)**



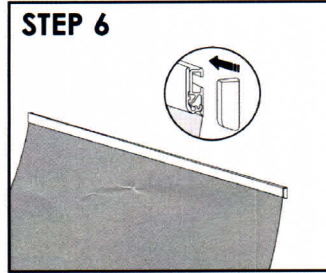
3. Remove the plastic end caps from the upper beam.



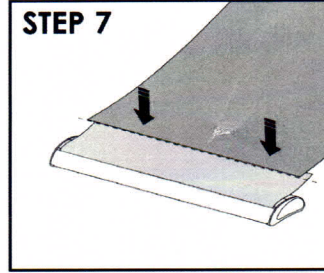
4. Swing open the beam's locking lip in order to attach the top edge of the banner. (Make sure the front of the banner is on the same side as the lip.)



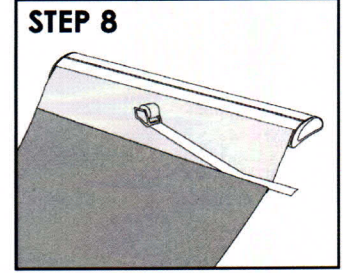
5. Slide the top banner edge under the lip (it should go in about 3/8" or 1cm) and close the lip to secure the banner...



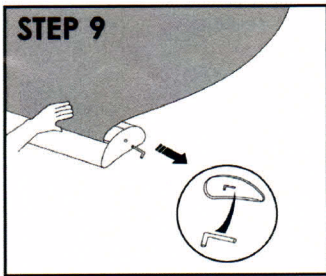
6. ...then finish the top by re-attaching the plastic end caps.



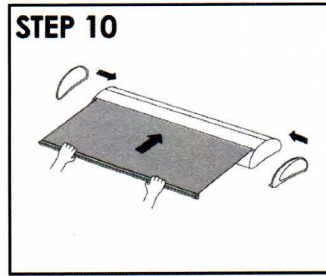
7. Peel off the adhesive cover along the edge of the base's leader roll, and attach the bottom of the banner (front facing up). **Make sure the banner is straight.**



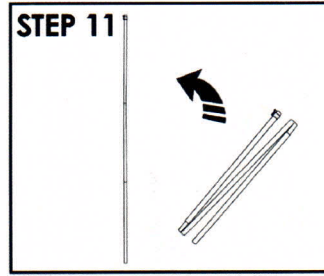
8. Finish securing the banner to the leader with a strip of wide (1 1/2" or equiv.) packing tape along the inside of the edge.



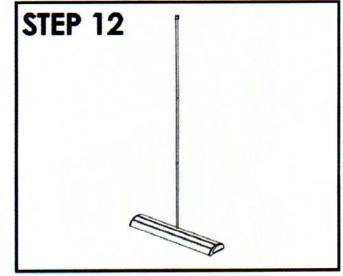
9. Remove the screw underneath the right chrome end of the base and detach. Then, **with the banner held firmly, carefully** pull out the retaining pin.



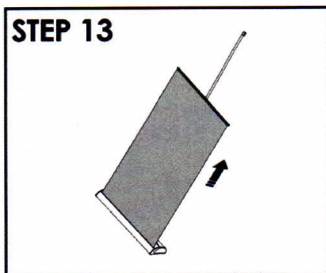
10. Carefully allow the banner to recoil into the base unit (it may be useful to have an assistant hold the base steady), then reattach the chrome end.



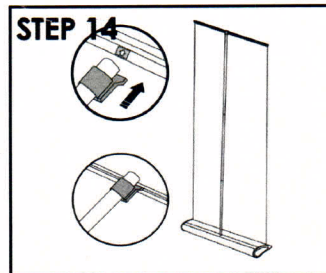
11. Unfold the pole and slip the pieces together to assemble it (The hooked end is the top, the round end is the bottom).



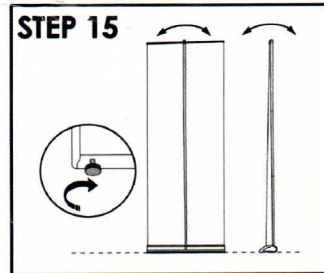
12. The bottom of the assembled pole slides into the round socket in the centre of the base unit.



13. Unfur the banner out of the base. (Tilting the unit backwards makes unfolding the graphic easier.)



13. The hook at the top of the pole slips into the rear slot of the banner beam. A marker on the beam indicates the beam's centre.



13. The unit can be levelled by adjusting the threaded feet at the bottom of the base unit.

Questions?
Call us toll free at
1-800-263-EXPO

ExpoSystems Canada Ltd.,
2161 Midland Ave., Scarborough,
Ontario, Canada M1P 4T3
Tel. (416) 291-2932
Fax (416) 291-0383
www.exposystems.com